



Promoting Positive Community Health through Gender Equitable Health Data

Michelle R. Kaufman, PhD, Kate Wright, MPH, Tahilin Sanchez Karver, PhD, MPH,
Deborah Levine, MA, Elyssa Clauson, MPH, Elise Tirza, MPH, Smriti Ridhi, MPH

**Bloomberg
Philanthropies**



**DATA FOR
HEALTH INITIATIVE**

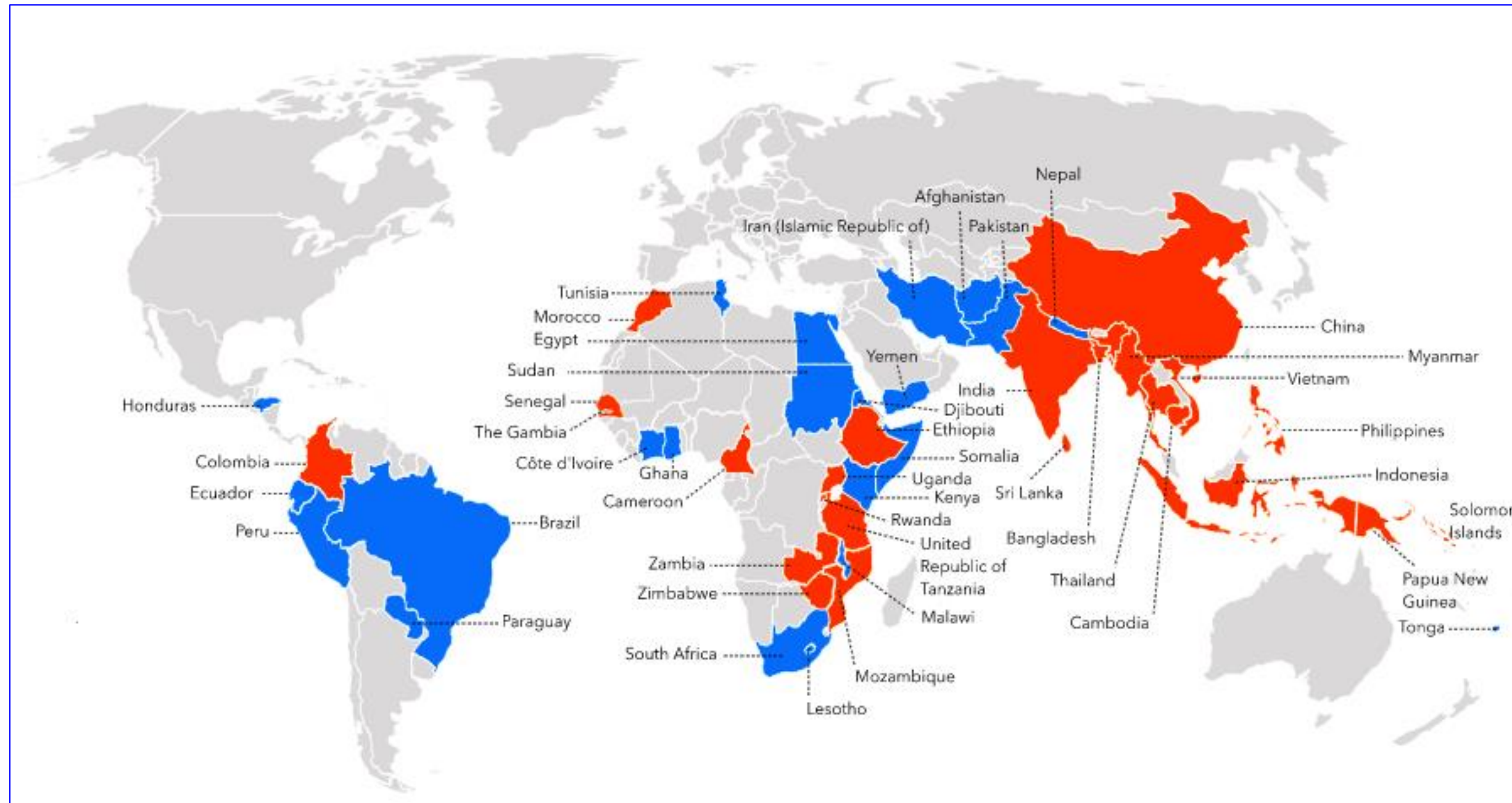


JOHNS HOPKINS
BLOOMBERG SCHOOL
of PUBLIC HEALTH



**GENDER
EQUITY UNIT**

Data for Health Initiative



Priorities:

- Support country collection of birth and death data
- Monitor major risk factors for early death
- Better use data to inform policy priorities, track trends and plan interventions

Data for Health Countries

■ Focus Country

■ Global Grants Program Country

Gender Equity Unit Overview

Objectives:

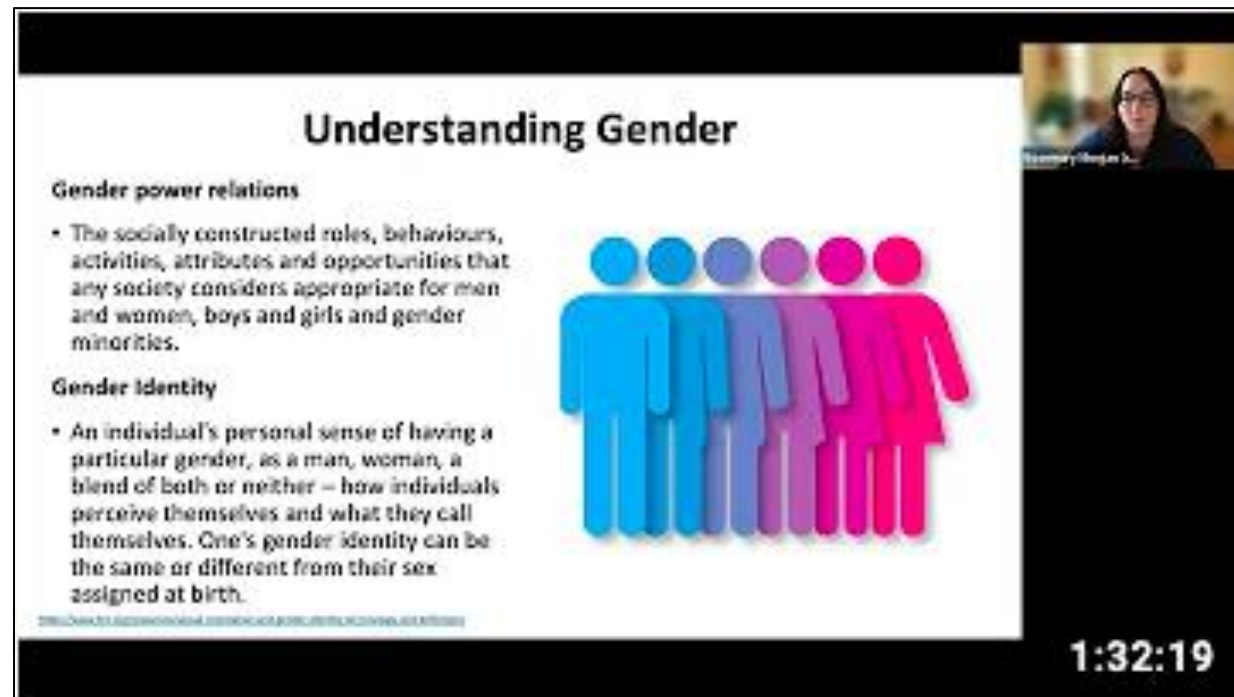
- Serve as a knowledge center and resource hub for partners and countries in the D4H initiative to center gender equity in their work
- Provide capacity building activities for partner liaisons and key country players relevant to gender equity
- Conduct research studies to advance gender equity in global public health through data systems by demonstrating importance, barriers, and strategies



GENDER
EQUITY UNIT

Programmatic Activities

Gender Foundations Series



- Seven 90-minute seminars aired from January – May 2022
- Topics included gender data collection, analysis, and data to policy
- 310 unique attendees; 60+ certificate awardees

Mentorship Program



- **Mentees:** individuals associated with D4H who want to build their gender equity expertise
- **Mentors:** experts in gender equity or with related skills in the Gender Equity Unit and local regions

Technical Assistance Case Example: Colombia

- Providing technical assistance to partners in Colombia to support identifying and addressing gender inequities and other disparities in birth and death certification/registration
 - Assist with systematic review protocol
 - Identify and recommend processes to enhance rigor of the review
 - Provide technical expertise in developing a data extraction form

GenderHealthData.org

Gender Equity in Global Health Data

We hope to help create a new global health data ecosystem that counts and values the lives and experiences of all people.



Sign up to be the first to know

Email* Country* Organization (optional)



Why Gender Data Matters in Global Public Health

Health systems need to be guided by complete sex and gender-inclusive data to improve health outcomes for ALL people. This seminar provides an overview of why gender data matters, spoken with the voices of the people it matters to.

Watch Video [→](#)

- Knowledge Center and learning hub
- Applications for mentorship program and gender-focused technical assistance for D4H partners
- Host resources:
 - Webinars & trainings
 - Publications
 - Quarterly Newsletter
 - Event Information
 - Repository of Gender Scales
 - Tip Sheets
 - Blog posts

Gender Equity Unit Levels of Gender Transformation

GENDER UNEQUAL

- Biased against one gender.
- Favored gender, (often male) gets more advantages.

GENDER NEUTRAL

- Ignore gender customs.
- Support traditional gender-based roles, favoring males.
- Ignore gender-based differences in opportunities & resource allocation

GENDER SENSITIVE

- Consider different gender norms & roles, but do not consider effects of existing gender inequalities.

GENDER SPECIFIC

- Target & benefit a particular gender based on their needs, gender norms, roles & relations.

GENDER TRANSFORMATIVE

- Consider & address differences in gender roles & norms.
- Very few policies fall here.

Adapted from the WHO Gender-Assessment tool

Research Activities

Landscape Analysis

- Use available reports, data, peer-reviewed publications to gain understanding of current gender context in D4H countries
- Provides baseline for individual country needs and informs future focus

Health Data Assessment

- Rating system to measure country's progress in achieving gender equity in health data, programming and policies
- Baseline with assessments conducted annually

Qualitative Study

- Gauge readiness to integrate gender equity work in health data
- Key informants include policymakers and data gathering institutions in D4H focus countries

Research Activities (continued)

Large-scale Gender Data Analysis



- To understand potential connections between gender data, policy, and health outcomes
- Analyze previously collected large-scale data to determine changes in health outcomes by sex/gender in accordance with policy changes
- Current focus on India and feticide

Social Media Gender Analysis



- Identify representations of demand and opportunity for gender equity data to generate gender-informed health policies, practice, and awareness.
- #Yesallwomen campaign

Gender Equity Unit Team

Principal Investigator: Michelle Kaufman, PhD

Program Lead: Deborah Levine, MA

Research Lead: Kate Wright, MPH

Assistant Scientist: Tahilin Sanchez Karver, PhD, MPH

Research Assistants: Elyssa Clauson, MPH, Elise Tirza, MPH, Smriti Ridhi, MPH, Evan Eschliman, MPH, Mingyue Ma, Imogen Evans



THANK YOU!

MichelleKaufman@jhu.edu



@mkaufman99

KWrigh41@jhu.edu

<https://www.linkedin.com/company/gender-equity-unit-of-the-data-for-health-initiative/about/>



@jhugenderequity